

## **Historic, archived document**

Do not assume content reflects current scientific knowledge, policies, or practices.



# Waynesboro Nurseries

INC.

WAYNESBORO, VA.

Baltimore Office: 2101 E. Fort Avenue

SPRING, 1935

Ask for Special Price on Large Quantities

**FRUIT TREES, ORNAMENTALS, LANDSCAPE SERVICE** of the highest quality, satisfaction guaranteed. The very fact that during the past two years, when commerce was at its lowest ebb, we sold more trees and plants than ever before in a corresponding period is proof that our plant material and service are meeting the demands of the most conservative and influential planters. You save money by planting the best. We solicit your continued business on these terms. We invite you who have not seen or used our stock to give us a trial.

**OUR STOCK AND PRICES.** During the past two years we reduced our prices until there was no profit left and then took another slice. We are now paying more for most of our supplies, and no doubt are justified in asking a price which will give us a small margin of profit. We, however, in this list are making very few changes, with the exception of prices on Fruit Trees, which are extremely scarce this season, due to low prices on Fruit Trees and curtailed production, which was further reduced by the severe winter of 1933-34 and drought in the middle west, making a large percent of Fruit Stocks unsalable. We urge you to take advantage of the present list by placing your order now while prices are still low and choice varieties available. For the benefit of those who are willing to use smaller grades and wait for the growth, we offer our "Mail Order Grade." The plants are just as healthy and are guaranteed to be true to name and to be delivered in good condition. Usually it is advisable to plant the larger sizes but if you prefer the smaller plants you will find our "Mail Order Grade" plants well developed, well rooted and full of life.

**WE PAY TRANSPORTATION CHARGES** to points in the United States east of the Mississippi on our Nursery Stock when purchased at list prices, and we guarantee our plants to be as represented, true to name, and to be delivered in good condition. When you place your order you can expect to receive exactly the varieties you order, and that the plants will be vigorous, up to grade, and well rooted.

**TERMS.** For cash in full with order, we allow 5 per cent discount, or a liberal premium in free stock. No discount is allowed unless cash in full accompanies order, but orders are accepted and booked when 25 per cent of the amount of the order accompanies the same.

**FREE REPLACEMENT GUARANTEE ON ORNAMENTAL NURSERY STOCK.** We furnish, free of charge, f.o.b. our shipping point, Ornamental Nursery Stock for replacing any purchased from us which may die, provided that the original shipment is paid for on or before its delivery, and provided the loss of the plants is reported to us within twelve months of date of delivery. Reasonable care for the stock on the part of the customer is also a condition of this replacement agreement. Fruit Trees and Berry Plants which may die and are reported to us as dead within twelve months of delivery, and Ornamental Nursery Stock sold on any terms other than cash on or before delivery and lost within twelve months, will be furnished at one-half list price.

**VARIETIES AND QUANTITIES.** In case you do not find listed the variety, quantity or grade desired, write us for further information.

**MAKING UP ORDERS.** Do not fail to give sizes, quantities and varieties wanted. Also give shipping point if different from post office, and approximately when you would like your stock shipped. Six at dozen rates; 50 at 100 rate; 300 at 1,000 rate.

**NOTICE OF WARRANTY.** While we are very careful to keep our varieties true to name, in the event they should prove otherwise, we cannot be responsible for more than the amount we receive for the stock.

## FRUIT TREES

Planters in various communities demand different sizes and varieties, so we offer a large list of both. All of our stock is clean, healthy, and true to name, and bears a State Certificate of Inspection. Our list of varieties is carefully worked out. Whether you are planting a commercial orchard or a small home orchard you can make a snitable selection from our list.

### APPLES

The following varieties for home orchards will furnish Apples from the earliest to the latest: Yellow Transparent, Summer Rambo, Williams Red, Grimes Golden, Delicious and Lowry.

#### One-Year Whips

	Each	Doz.	100	1,000
2-3 ft. ....	\$0.45	\$4.50	\$30.00	\$250.00
3-4 ft. ....	.55	5.50	35.00	300.00
4-6 ft. ....	.65	6.50	40.00	350.00

#### Two-Year Branched

	Each	Doz.	100	1,000
3-5 ft. ....	\$0.70	\$ 7.00	\$40.00	\$350.00
4-6 ft. ....	.85	8.50	48.00	400.00
5-7 ft. 2 & 3 yr.	1.00	10.00	60.00	

Note: Albemarle Pippin 5c above quoted prices.

#### VARIETIES

**Albemarle Pippin.** Yellowish green. Winter.  
**Ben Davis.** Well-known red Winter Apple. Poor quality but popular for export market.  
**Bonum.** Red Fall Apple, medium size. Excellent quality for export.  
**Delicious.** Red and green striped. One of the best known Winter varieties. Excellent quality.  
**Grimes Golden.** The most popular late Fall and early Winter yellow Apple, 1 yr.  
**Hyslop Crab.** Excellent for jellies.  
**Jonathan.** A late Fall, solid red export Apple. Much in demand for exporting.  
**Maiden Blush.** Favorite Midsummer home and commercial variety.  
**Mammoth Black Twig.** Large, dark red. Long keeper. Good quality. Rather shy bearer.  
**N. W. Greening.** Large Winter green Apple.  
**Paragon.** Resembles Black Twig, but is more abundant bearer.  
**Rome Beauty.** A well-known striped Winter Apple. Very near sweet.

#### TOWN TALK

Town Talk is more than a novelty and a curiosity. Conceive six different varieties growing on one tree. You can have Apples ripening from June until late Fall, when the late varieties may be gathered for Winter use. Town Talk is not a commercial proposition but ideal when space permits only two to four trees. Imagine a tree bearing six varieties at one time and being able to enjoy ripe Apples from your own back lot from June until November. Then possibly have some to store for Winter use.

2 yr., 6 to 7 ft. trees, \$2.75 each, two for \$5.00, four for \$9.50, delivered.

**Smokehouse.** Aug.-Sept. Striped. Favorite home orchard variety.

**Stayman.** One of our most popular commercial Apples of the Winter varieties. Large, red, green striped.

**Summer Rambo.** Undoubtedly one of the best Summer varieties of its season. Large, striped, excellent quality. Ripens in August. 1 yr.

**Williams Red.** Another popular export Apple. Early Fall, medium size and red.

**Winesap.** Standard commercial variety. Medium size. Solid red.

**Yellow Transparent.** The earliest Apple on our list. A very popular early Apple. Medium size and excellent for cooking purposes.

**YORK IMPERIAL.** The most extensively planted Apple in Virginia for commercial purposes. Greenish background, red cheek, good quality and keeper. In demand for both local and foreign markets.

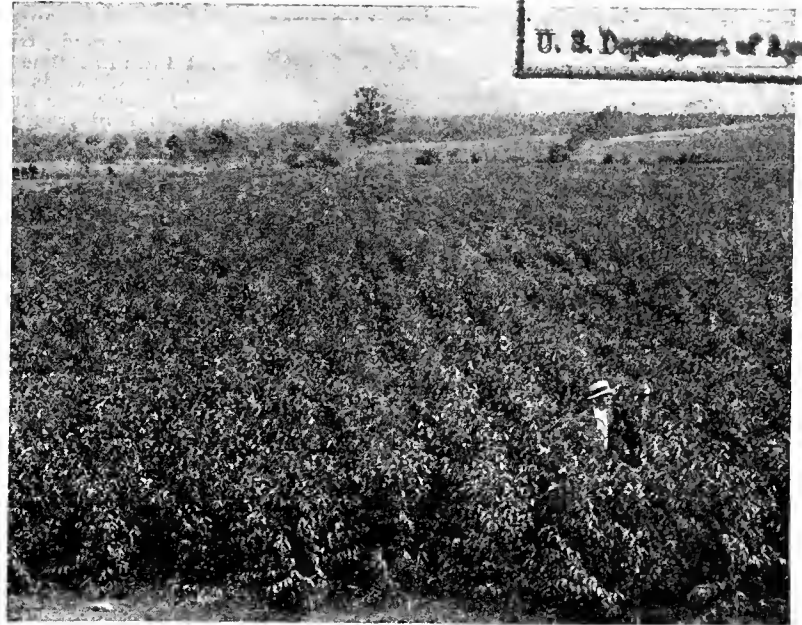


New Red Stayman

**LADY.** Small, Golden background, red blush. Used in table decoration. Always demands fancy prices. Trees same price as New Double Red Varieties.

#### FRUIT TREES EXTREMELY SCARCE

A recent Nursery Survey shows that the supply of Fruit Trees available for Spring planting is less than 20% of the usual supply. Many Nurseries have none whatever to offer. At the beginning of the season we had our usual supply but have already completely sold in some varieties and are selling close in others. You can help us serve you best by placing your order early.



A Block of 350,000 Peach Trees of Commercial Varieties, Budded on Old Time Peach Seedlings

## NEW DOUBLE RED VARIETIES

	Each	Doz.	100	1,000
1 yr. 2-3 ft.	\$0.60	\$ 6.00	\$35.00	\$300.00
1 yr. 3-4 ft.	.75	7.50	45.00	350.00
1 yr. 4-6 ft.	.85	8.50	50.00	450.00
2 yr. 3-5 ft.	.85	8.50	50.00	450.00
2 yr. 4-6 ft.	1.00	10.00	55.00	500.00

## NEW SOLID RED DELICIOUS

A "Super" Delicious. An Apple with all the good qualities of the Common Delicious: Same size, same shape, same flavor, same texture and same ripening period, but the New Solid Red Delicious colors two to three weeks earlier and colors solid red without trace or sign of stripe, even into the stem and blossom ends. It can be picked "hard ripe" with full color. It has excellent storage qualities and is the most beautiful Apple ever seen. Write for further information.

## LOWRY

Beautiful dark red Winter Apple, enjoying the reputation of selling for the highest price of any Apple grown in Virginia. It sells for \$1.00 to \$2.00 more per barrel than standard varieties. Always in demand both as a home variety and a commercial Apple. The Lowry should be in every orchard whether home or commercial.

## NEW RED ROME

Same as Rome Beauty with the exception of being a solid red.

## NEW SOLID RED STAYMAN

A solid red Stayman. Sport of the well-known Stayman, having all the good qualities of the Common Stayman and the big advantage of being solid red in color instead of pale striped greenish coloring found in the Common Stayman. Write for further information.

## BLACKJON

### New Solid Red Jonathan

Same size, quality and shape as Common Jonathan and differs only by coloring two weeks earlier and by actual count the sport limb on original tree packed 97% Extra Fancy as to color, while remainder of tree only. 23% Extra Fancy. 1 yr. only.

Yellow Delicious. 1 yr., 4-6 ft. trees, same price as New Double Red Varieties.



## PEACHES ARE PROFITABLE

Good roads, trucks, and automobiles have greatly expanded our Peach markets, increasing consumption. At the same time Peach planting has fallen off. Even during 1933—when markets were glutted with almost all kinds of fruits and grains and reduced acreage was being demanded—Peaches remained scarce and sold at fancy prices. Peaches start bearing within two or three years and are one of the surest fruit crops grown. Plant Peaches for large profits and quick returns.

Our Peach trees are budded on the sturdy, old-time native seedling roots, which are more resistant to various insects and diseases to which improved varieties are susceptible. That is why our trees are more vigorous and last longer.

For your convenience we are listing our Peaches in ripening order. If more complete descriptions are required, write or ask our local representative.

Variety	Ripening Period	Class	Description
Mayflower	June 15th	Clingstone	Sells because of earliness
Red Bird	June 20th	Clingstone	White, large, firm, red, good shipper
Alton	July 1st	Semi-free	Large, good quality
Early Rose	July 10th	Semi-cling	White, one of the best of the season
Carman	July 20th	Semi-free	White, regular bearer
<b>GOLDEN JUBILEE</b>	July 20th	Freestone	Yellow, large, good quality
Hiley	July 25th	Freestone	White. Resembles Belle of Georgia
Champion	August 1st	Semi-free	White, large, sure bearer
Slappy	August 1st	Freestone	Yellow, medium size, excellent quality
Early Crawford	August 5th	Freestone	Yellow, old-time favorite
Belle of Georgia	August 10th	Freestone	White, favorite canning variety
Elberta	August 15th	Freestone	Popular Yellow Freestone
Hale	August 20th	Freestone	Yellow, large, good shipper
Late Crawford	August 20th	Freestone	Favorite yellow
Brackett	August 20th	Freestone	Resembles Elberta, better quality
Shippers' Late Red	August 25th	Freestone	Closely resembles Elberta
Indian	Sept. 1st	Clingstone	Red flesh, excellent for pickles
Stump	Sept. 1st	Freestone	White, favorite home orchard variety
Salway	Sept. 1st	Freestone	Yellow, best of its season
Krummel's October	Sept. 20th	Freestone	Favorite late variety
Heath	Sept. 25th	Clingstone	Most popular late white variety

Elberta and Hale sold only in connection with other varieties.

	Each	Doz.	100	1,000
15-18 in.	\$.25	\$2.50	\$10.00	\$90.00
18-24 in.	.35	3.50	14.00	120.00
2-3 ft.	.45	4.50	18.00	150.00
3-4 ft.	.50	5.00	24.00	200.00
4-6 ft.	.65	6.50	30.00	250.00

## PLUMS

Plums require little space and are often planted in orchards between apple trees. We consider the following the most desirable varieties:

	Each	Doz.	100
2-3 ft.	\$.65	\$ 6.50	\$35.00
3-4 ft.	.85	8.50	50.00
4-6 ft.	1.00	10.00	60.00

## QUINCES

A very popular fruit which is seldom found on the market, but always in demand. Quinces demand from \$3.00 to \$4.00 per bushel. Orange is the best variety. Champion is another good variety. Varieties: Orange and Champion.

	Each	Doz.	100
2-3 ft.	\$.65	\$ 6.50	\$35.00
3-4 ft.	.85	8.50	50.00
4-5 ft.	1.00	10.00	60.00

## APRICOTS and NECTARINES

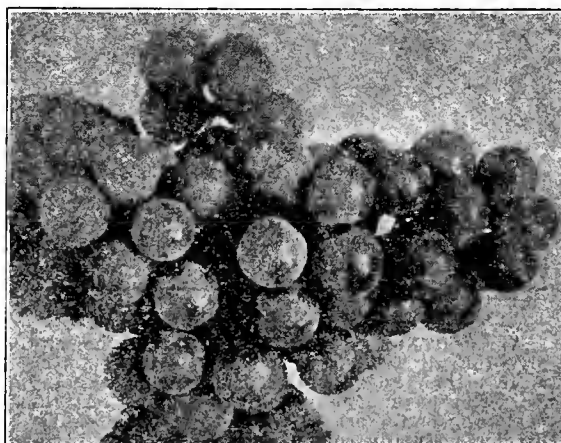
can be grown wherever Peaches can be grown. Many planters are neglecting to plant this fine profit-making fruit. We offer the hardy Russian variety.

	Each	Doz.	100
2-3 ft.	\$.65	\$ 6.50	\$35.00
3-4 ft.	.85	8.50	50.00
4-6 ft.	1.00	10.00	60.00

## GRAPES

Grapes require little space and attention. Surely you have a place for a few. The collection we offer will furnish Grapes from the earliest to the latest.

Brighton. One of the most popular reds. Excellent quality.  
 Moore's Early. Best early blue.  
 Concord. Most popular blue.  
 White Niagara. Large perfect bunch. Midseason.  
 Delaware. Red. Late. Good keeper.  
 Catawba. Red. Excellent wine Grape.



White Niagara

## GRAPES

	Each	Doz.	100	1,000
1 yr. vines	\$.35	\$3.50	\$20.00	\$180.00
2 yr. vines	.45	4.50	25.00	225.00

## NEW VARIETIES

Caco. New variety; considered the best red.  
 Ives. Purple wine variety. 1 yr. only.  
 Lutie. New, large red Grape, unsurpassed in quality.

	Each	Doz.	100
1 yr. vines	\$.45	\$4.50	\$25.00
2 yr. vines	.65	6.50	35.00

## SMALL FRUITS

Only a little space is required to grow enough Berries for home use. Small space can be profitably devoted to growing Berries. These small fruits are proving to be profitable commercial crops.

## RASPBERRIES

CHIEF. Red. Sport of the famous Latham; ten days earlier.  
 Cumberland. Best purple.  
 Cuthbert. Well known red.  
 LATHAM. Brilliant red; mosaic-free. Heavy bearer.

Plum Farmer. Dependable black.  
 St. Regis. Best Everbearing. Red.  
 \$1.25 per 25; \$3.85 per 100; \$33.00 per 1,000

## BLACKBERRIES and DEWBERRIES

Early Harvest. No doubt the best quality for home use. Also profitable commercial variety.  
 Eldorado. Large, juicy, excellent flavor. Most popular commercial variety.  
 Lucretia Dewberry. Very prolific, large and sweet; equal in size to the largest Blackberry. Succeeds everywhere.  
 \$1.25 per 25, \$3.85 per 100, \$33.00 per 1,000.

## YOUNGBERRY

Large wine-color fruit resembling Blackberries. Excellent quality and very prolific.  
 \$1.00 per doz., \$1.75 per 25, \$4.75 per 100, \$38.00 per 1,000

## FIGS

Brown Turkey and Celestial. 2-3 ft., \$1.00 each; \$10.00 per dozen.

## GOOSEBERRIES

Houghton. Most popular red.  
 Downing. Large. Improved white.  
 35c each, \$3.50 per doz., \$20.00 per 100

## CURRANTS

Red Cross. Large. Most popular red.  
 Wilder's. Early red. Medium size.  
 35c each, \$3.50 per doz., \$20.00 per 100

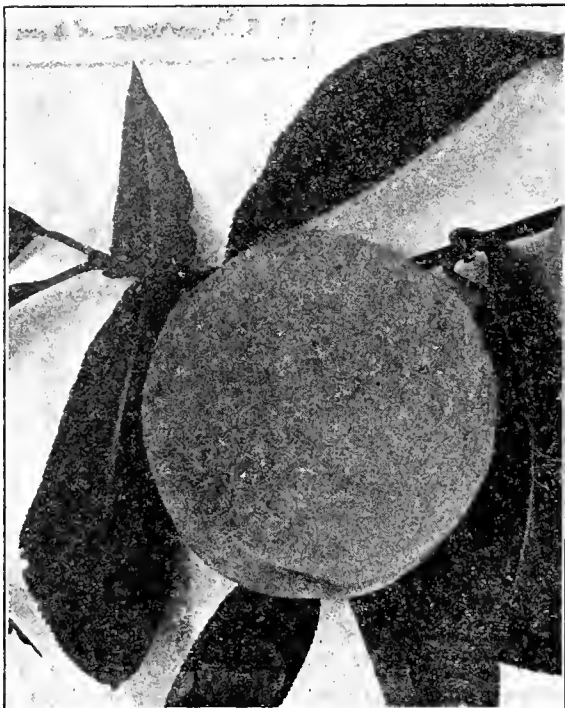
## RHUBARB

Myatt's Linnaeus. Early, long, tender stalks, neither tough nor stringy. 30c each, \$3.00 per doz., \$15.00 per 100.

## ASPARAGUS

Pedigreed Washington. There are a lot of different varieties. Some nurserymen list as many as half a dozen, but the Pedigreed Washington has been proved far superior to the old varieties, so why plant the others? We list only the Pedigreed Washington.

1 yr., field grown roots: 75c per doz., \$2.50 per 100, \$12.00 per 1,000.  
 2 yr., field grown roots: \$1.00 per doz., \$3.50 per 100, \$15.00 per 1,000.



Golden Jubilee Peach

## CHERRIES

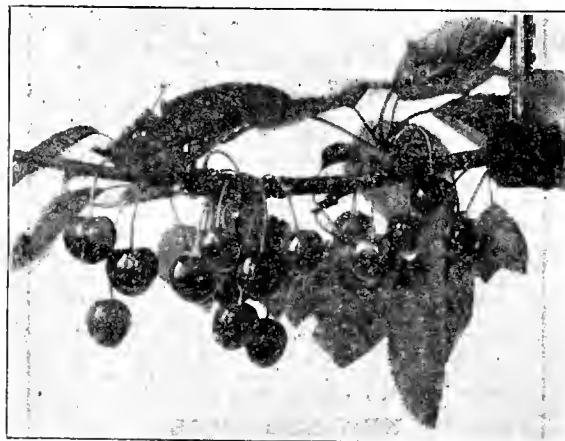
Plant Cherries commercially for profit. They are easily grown and prices for the fruit are always high. They produce large crops comparatively early and are not affected by many diseases or pests. Write for more information about Cherries. Bing. Good dark red sweet. Best shipper.  
 Black Tartarian. Well-known commercial sweet.  
 Early Richmond. Best known sour.  
**GOVERNOR WOOD.** Most popular wax variety.  
 Lambert. Favorite dark purple sweet.  
 Large Montmorency. Best large red sour.  
 Napoleon. New wax variety. Yellow, red cheek.

	Each	Doz.	100
2-3 ft.	\$.65	\$ 6.50	\$35.00
3-4 ft.	.85	8.50	50.00
4-6 ft.	1.00	10.00	60.00

## NEW VARIETIES

Hackett. Earliest dark sweet Cherry.  
 Greenwood. Largest Cherry grown. Dark purple. Small seed, sweet.

	Each	Doz.	100
2-3 ft.	\$.85	\$ 8.50	\$50.00
3-4 ft.	1.00	10.00	60.00
4-6 ft.	1.25	12.00	75.00



Large Montmorency Cherry

## PEARS

Pears will continue to be scarce and sell for good prices as few have been planted within the past twenty years. Plant now for both home use and market.

Bartlett. Well known. Most popular Summer Pear. Ripens August.  
 Garber. Rapid grower, good quality. Splendid where assortment is demanded. Ripens in September.  
 Kieffer. The most extensively planted Pear. Quality not as good as some, but one of our best canners.  
 Koonce. Early, medium size, yellow with carmine cheek. Heavy bearer, blight resisting. July and August.  
 Seckle. Small, sweet, excellent quality. Fine for pickling, canning, or eating from the band.

	Each	Doz.	100
2-3 ft.	\$.65	\$ 6.50	\$35.00
3-4 ft.	.85	8.50	45.00
4-6 ft.	1.00	10.00	60.00

## STRAWBERRIES

There is more variation in the price of Strawberry plants than most Nursery Stock. Why is it? There is a reason. Some dig plants from old bearing patches and sell the plants as a by-product. They must necessarily be sold at a low price as the more experienced planters will not use such plants. Hence such growers must find customers who buy where the cheapest plants are to be had, regardless of whether they are old or new. Delivery costs also are to be considered. We pay transportation charges and guarantee safe arrival. We furthermore agree to replace at half list price any plants which may be lost the first season from causes beyond our control.

Varieties are listed in ripening order, so you may make a selection ripening from the earliest to the latest.

**FAIRFAX**—A New Sensation. Early, prolific, unusually productive, large and firm. Introduced by U. S. Department of Agriculture. Plants same price as Mastodon.

**DORSETT**. Another U. S. Department of Agriculture introduction. Early, productive, frost resistant, large, firm. One of the most promising new varieties. Plants same price as Mastodon.



Blakemore Strawberries

- Klondyke**. An old favorite. Early, sweet. Premier. The most popular commercial variety. Good size, excellent quality.
- Blakemore**. Recommended by Department of Agriculture as an outstanding new variety. Supercedes Premier in yield and quality.
- Aroma**. The most extensively planted commercial variety. Midseason.
- Big Joe**. Extra large. Midseason.
- Gandy**. An old favorite. Late. \$1.75 per 100, \$3.00 per 250, \$4.25 per 500, \$6.75 per 1,000, \$32.50 per 5,000

### EVERBEARING VARIETIES

- Champion**. Most popular everbearing.
- Mastodon**. New everbearing. Largest grown. \$2.50 per 100, \$5.00 per 250, \$8.00 per 500, \$15.00 per 1,000

## NUT TREES

- Black Walnuts**. Easily grown, profitable for nuts as well as timber. Our nursery grown trees are easily transplanted and will prove profitable. 3-4 ft., \$1.00 each; \$10 per doz., \$65 per 100.
- Butternut**. 4-6 ft., \$1.50 each; 6-8 ft., \$2.00.
- Japanese Walnuts**. 3-4 ft., \$1.50 each; \$15.00 doz.
- English Walnuts**. These nuts promise to become a profitable commercial crop in Virginia and adjoining states. It has been found by actual test that they can be grown as successfully in this section as anywhere in the United States. The trees thrive and the fruit is of as good quality as that produced elsewhere. A tree ten miles from us has been known to produce as much as \$80.00 worth of nuts in one season. We offer the Virginia Thin Shell, 18-24 in., Mail Order Size, 75c each, \$7.50 per doz.; 2-3 ft., \$1.00 each, \$10 per doz., \$65 per 100; 3-4 ft., \$1.50 each, \$15 per doz., \$85 per 100.

## PECANS

- Stuart**. Paper shell, large. Bears young, makes good yield. 3-4 ft., \$1.50 each, \$15.00 per doz., \$95.00 per 100.



English Walnuts

# ORNAMENTAL AND LANDSCAPE DEPARTMENT



From our selection of choice Shrubs, Evergreens, Shade Trees, Roses, Tuberous Plants, and Perennials, a selection can be made suitable for any requirement.

**Landscape Service**. We employ a professional landscape architect and a number of practical, well trained field men whose services are always available for our customers. If we can be of any service to you, do not hesitate to call on us.

Our standard grade of stock is grown chiefly for the larger landscape developments and is not to be compared to light Mail Order Grades often quoted. Even the smaller stock we list as "Mail Order Grade" is well rooted, branched, and much of it will give immediate effect.

Make use of our Landscape Department. We have established it for your benefit and it is at your command. If too far away for one of our landscape men to see you, send in measurements of your grounds and a photo of the house for suggestions.

## DECIDUOUS SHRUBS

All Shrubs quoted at 35c each will be furnished at \$25.00 per 100; all 50c Shrubs at \$35.00 per 100; all 75c Shrubs at \$60.00 per 100. Ask for special prices on larger quantities.

**ABELIA**. Evergreen; grows 4-6 ft. tall. Pink blossoms all Summer. Mail Order Size, 60c each; 18-24 in., \$1.00 each, \$10.00 per doz.; 2-3 ft., \$1.50 each, \$15.00 per doz.; 3-4 ft., \$1.85 each, \$20.00 per doz.; 4-5 ft., \$2.75 each.

**Almond, Flowering**. Dwarf shrub. White or pink. Blossoms in March. 2-3 ft., 85c each, \$8.50 per doz.

**Althea (Rose-of-Sharon)**. Old-time favorite shrub. Pink, white, purple, or red. Mail Order Size, 35c each; 2-3 ft., 50c each, \$5.00 per doz.

**BARBERRY, NEW RED**. Same as the Thunbergi, except that the foliage is a deep blood red. Most popular shrub introduced within the past ten years. Mail Order Size, 45c each, \$4.50 per doz.; 18-24 in., 65c each, \$6.50 per doz.; 2-3 ft., 85c each, \$8.50 per doz., \$45.00 per 100.

**Barberry Thunbergi**. Mail Order Size, 30c each, \$3.00 per doz., \$15.00 per 100; 18-24 in., 50c each, \$5.00 per doz., \$35.00 per 100; 2-3 ft., 75c each, \$7.50 per doz.

**BEAUTYBUSH (Kolkwitzia)**. A new shrub from China. Long, arching branches covered in the Spring with clusters of small, tubular, pink flowers. One of the most popular new shrubs recently introduced. 18-24 in., 75c each, \$7.50 per doz.; 2-3 ft., \$1.00 each, \$10.00 per doz.; 3-4 ft., \$1.50 each, \$15.00 per doz.

**Bush Honeysuckle, fragrantissima, morrowi, tartarica rubra**. Pink, white or red flowers that appear with the first robin. Mail Order Size, 35c each; 2-3 ft., 50c each, \$5.00 per doz.; 3-4 ft., 75c each, \$7.50 per doz.

**Butterflybush (Summer Lilac)**. Purple blooms resembling Lilacs. Blossoms first season. Excellent as cut flower. Very fragrant. Blooms from June to November. Mail Order Size, 35c each; 2-3 ft., 50c each, \$5.00 per doz.

**Callicarpa Purpurea (Chinese Beauty Bush)**. Graceful, dwarf shrub. White flowers during July and August followed by purple berries. 2-3 ft., 75c each, \$7.50 per doz.

**Calycanthus (Sweetshrub)**. Very fragrant, chocolate brown blossoms in early Spring. Mail Order Size, 60c each; 18-4 in., 75c each, \$7.50 per doz.; 2-3 ft., \$1.00 each, \$10.00 per doz.

**Coralberry**. Greenish red flowers, followed by red berries which remain throughout the Winter. Mail Order Size, 35c each; 2-3 ft., 50c each, \$5.00 per doz.

**Cotoneaster Acuminata**. White flowers tinged pink with scarlet Winter fruits. Erect shrubs. 3-4 ft., \$1.00 each, \$10 doz.; 4-6 ft., \$1.50.

**CRAPEMYRTLE**. A favorite shrub in the South. Red, pink, or purple. Mail Order Size, 75c each; 2-3 ft., \$1.00 each, \$10.00 per doz.; 3-4 ft., \$1.50 each, \$15.00 doz.

**Daphne Mezereum**. Lilac colored flowers in Spring. 15-18 in., 85c each, \$8.50 per doz.

**Desmodium**. Abundant, small lavender blossoms in September and October. Mail Order Size, 35c each; 3 yr. clumps, 50c each, \$5.00 doz.

**Deutzia Gracilis**. A small shrub with slender, arched branches. Showy white flowers in graceful nodding racemes. 12-15 in., 50c each, \$5.00 per doz.

**Deutzia, Standard**. Mail Order Size, 35c each; 2-3 ft., 50c each, \$5.00 per doz.; 3-4 ft., 75c each, \$7.50 per doz.

**Dogwood, Golden Stem**. Dwarfish plant, golden twigs, white blossoms and white berries. 2-3 ft., 75c each, \$7.50 per doz.

**DOGWOOD, PINKFLOWERING**. A valuable, distinctive shrub. 18-24 in., \$1.00 each, \$10.00 per doz.; 2-3 ft., \$1.50 each, \$15.00 per doz.; 3-4 ft., \$2.25 each, \$24.00 per doz.; 4-5 ft., B&B, \$4.50 each; 5-6 ft., B&B, \$6.00 each; 7-8 ft., B&B, \$7.50.

**Dogwood, Red Stem**. Bright red twigs, creamy white flowers and white berries. Very showy. 2-3 ft., 75c each, \$7.50 per doz.; 3-4 ft., \$1.00 each, \$10.00 per doz.

**DOGWOOD, WHITEFLOWERING**. Beautiful, broad white blossoms in Spring. 2-3 ft., 65c each, \$6.50 per doz., \$45.00 per 100; 3-4 ft., 85c each, \$8.50 per doz., \$65.00 per 100; 4-6 ft., \$1.75 each, \$18 per doz., \$100 per 100.

**Doubleflowering Peach**. Pink, red, or white. Resembles peach blossoms, but double. Mail Order Size, 60c each; 3-4 ft., \$1.00 each, \$10.00 doz.

**Euonymus Alatus (Winged Burningbush)**. Dwarfish upright shrub with chocolate-colored flowers followed by red berries. 3-4 ft., \$1.50 each, \$15.00 per doz.; 4-5 ft., \$2.00 each.

**Forsythia**. We offer fortunei, intermedia, suspensa and viridissima. Drooping, yellow, bell-shaped flowers in early Spring. Effective in clumps and as a hedge. Mail Order Size, 35c each; 2-3 ft., 50c each, \$5.00 per doz.; 3-4 ft., 75c each, \$7.50 per doz.

**Golden Ligustrum**. Dwarf, Golden foliage. 18-24 in., \$1.00 each, \$10.00 per doz.; 2-3 ft., \$1.50 each, \$15.00 per doz.

**Highbush Cranberry**. White flowers, purple berries. 2-3 ft., 75c each, \$7.50 per doz.; 3-4 ft., \$1.00 each.

**Hydrangea, French Blue**. 2 yr., 75c each, \$7.50 per doz.; 3 yr., \$1.00 each, \$10.00 per doz.



Crapemyrtle

**Hydrangea, Hills of Snow**. 18-24 in., 50c each, \$5.00 per doz.; 2-3 ft., 75c each, \$7.50 per doz.

**Hydrangea, Oakleaf**. 3 yr., \$1.00 each, \$10 doz.

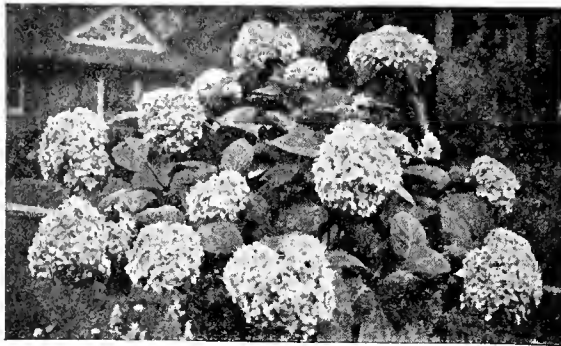
**Hydrangea paniculata Grandiflora**. Mail Order Size, 35c each; 18-24 in., 50c each, \$5.00 per doz.; 2-3 ft., 75c each, \$7.50 per doz.

**Hypericum Prolificum**. Unique, low-growing shrub with rich yellow flowers. 18-24 in., 75c each, \$7.50 per doz.

**ibota Privet**. Grayish green foliage and snowy white flowers in June. Bluish berries in Winter. 18-24 in., 35c each, \$3.00 per doz.; 2-3 ft., 50c each, \$5.00 per doz., \$30.00 per 100.

**Japanese Bloodleaf Maple**. Blood red foliage in Spring and Summer; dark purple in Fall. A very effective, small tree. 15-18 in., \$2.50 each; 18-24 in., \$3.50 each.

**Japanese Flowering Quince**. A Spring flowering shrub with large red flowers. 18-24 in., 75c each, \$7.50 per doz.; 2-3 ft., \$1.00 each, \$10.00 per doz.



Hydrangea, French Blue (See page 3)

Japanese Greenleaf Maple. Similar to the Blood-leaf Maple, except that the foliage is green. 18-24 in., \$1.25 each.

Kerria Japonica. A mass of golden yellow flowers in Spring. Twigs remain green during Winter. 18-24 in., 75c each, \$7.50 per doz.

Lilac, Named Varieties:

Belle de Nancy. Satiny rose white.  
Charles Sargent. New purple.  
Charles X. Single, reddish purple.  
Ludwig Spaeth. Single blue.  
Marie Legraye. Single, pure white.  
Michael Buchner. Double, pale lilac.  
Mme. Lemoine. Double, white.  
Pres. Grevy. Double, blue.  
Rothomagensis. Reddish purple.  
Rubra de Marlay. Single, reddish purple.  
Villosa. Late. Light purple in bud and white when opened.

Mail Order Size, 45c each; 18-24 in., 65c each, \$6.50 per doz.; 2-3 ft., \$1.00 each, \$10 doz.; 3-4 ft., \$1.50 each, \$15 doz.

Lilac, Purple and White. Mail Order Size, 35c each; 2-3 ft., 75c each, \$7.50 per doz.; 3-4 ft., \$1.50 each, \$15.00 per doz.

Mockorange, Coronarius. Creamy white. Very fragrant blossoms. Mail Order Size, 35c each; 2-3 ft., 50c each, \$5.00 doz.; 3-4 ft., 75c each, \$7.50 doz.; 4-5 ft., \$1.00 each, \$10.00 doz.

Mockorange, Virginal. Fragrant, semi-double flowers through most of Summer. 2-3 ft., 75c each, \$7.50 doz.; 3-4 ft., \$1.00 each, \$10.00 doz.

Paul's Scarlet Thorn. 3-4 ft., \$1.75 each, \$20.00 per doz.; 4-6 ft., \$2.50 each, \$25.00 per doz.

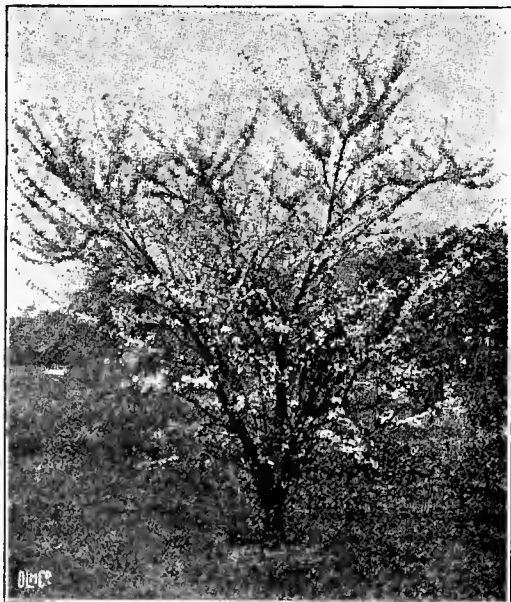
Prunus Pissardi. Blood red foliage throughout the Summer. Mail Order Size, 75c each; 3-4 ft., \$1.00 each, \$10.00 per doz.; 4-5 ft., \$1.50 each, \$15.00 per doz.

Prunus Tomentosa (Chinese Flowering Plum). Dwarf shrub suitable for borders. Fruit is delicious, flowers attractive. 3-4 ft., \$1.00 each, \$10.00 doz.; 4-6 ft., \$2.00 each, \$20.00 doz.

Pussy Willow. Large shrub, useful in border or as specimen. 3-4 ft., 50c each, \$5.00 per doz.; 4-6 ft., 75c each, \$7.50 per doz.; 6-8 ft., \$1.00 each, \$10.00 per doz.

**REDBUD (Judas Tree).** 3-4 ft., 75c each, \$7.50 per doz.; 4-6 ft., \$1.00 each, \$10.00 doz.; 6-8 ft., \$1.50 each, \$15.00 doz.

Regal Privet. Strong, hardy type. Graceful, drooping effect. 18-24 in., 35c each, \$3.50 per doz., \$25.00 per 100.



Redbud (Judas Tree)

Rhodotypos (Jetbead). Graceful shrub with white Spring flowers which are followed by bunches of glistening black berries, which remain through the Summer and Winter. 18-24 in., 75c each, \$7.50 per doz.

Snowball, Common. 18-24 in., \$1.00 each, \$10.00 per doz.; 2-3 ft., \$1.25 each, \$12.00 per doz.

Snowball, Japanese. 18-24 in., 75c each, \$7.50 per doz.; 2-3 ft., \$1.25 each, \$12.00 per doz.

Snowberry. Mail Order Size, 35c each; 2-3 ft., 50c each, \$5.00 per doz.; 3-4 ft., 75c each, \$7.50 per doz.

Spiraea, Anthony Waterer. Dwarf pink flowering shrub. Blooms all Summer. Mail Order Size, 35c each; 12-15 in., 50c each, \$5.00 per doz.; 15-18 in., 75c each, \$7.50 per doz.

Spiraea Billardi. Medium height. Pink. Mail Order Size, 35c each; 2-3 ft., 50c each, \$5.00 per doz.; 3-4 ft., 75c each, \$7.50 per doz.

Spiraea Froebeli. Medium grower. Pink blossoms throughout the Summer. Mail Order Size, 35c each; 18-24 in., 50c each, \$5.00 per doz.

Spiraea, Golden. Tall growing. White flowers in early Spring; golden foliage throughout Summer. Mail Order Size, 35c each; 2-3 ft., 50c each, \$5.00 doz.; 3-4 ft., 75c each, \$7.50 doz.

Spiraea Prunifolia. The old-time Bridalwreath. 2-3 ft., 75c each, \$7.50 per doz.

Spiraea Thunbergi (Japanese Spirea). Dwarf habit, earliest blooming Spirea; white flowers. 18-24 in., 75c each, \$7.50 per doz.; 2-3 ft., \$1.25 each, \$12.00 per doz.

**SPIRAEA VANHOUTTEI.** Most popular of all the Spiraeas. Mail Order Size, 35c each; 2-3 ft., 50c each, \$5.00 per doz.; 3-4 ft., 75c each, \$7.50 per doz.; 4-5 ft., \$1.50 each, \$15.00 per doz.

Symphoricarpos Chenaulti. New Hybrid Improved Coralberry. Beautiful shrub. Grows 3 to 4 ft. Covered with coral-red berries which hang on until mid-winter. 18-24 in., 75c each, \$7.50 per doz.

Tamarix Africana and Amurensis. Pink flowers; light, feathery foliage. Mail Order Size, 35c each; 2-3 ft., 50c each, \$5.00 per doz.; 3-4 ft., 75c each, \$7.50 per doz.

Vitex Agnus Castus (Chaste Tree). Large shrub or small tree with beautiful blue spikes. 2-3 ft., 75c each, \$7.50 per doz.; 3-4 ft., \$1.00 each, \$10.00 per doz.

Weigela, Eva Rathke. Most popular, dwarf, red. Mail Order Size, 45c each; 18-24 in., 75c each, \$7.50 doz.; 2-3 ft., \$1.00 each, \$10.00 doz.

Weigela Rosea. Pink. Mail Order Size, 35c each; 2-3 ft., 75c each, \$7.50 per doz.; 3-4 ft., \$1.00 each, \$10.00 per doz.

**WHITE FRINGE.** Large, showy shrub with big, shiny leaves and lacelike white flowers. 2-3 ft., \$1.00 each, \$10.00 per doz.; 3-4 ft., \$1.50 each, \$15.00 per doz.

Winter Jasmine. Almost an evergreen. Offers a profusion of yellow blossoms during warm Winter days. 2 yr., 75c each, \$7.50 per doz.

### PRIVET HEDGE

A Privet hedge is much cheaper than a fence and is far more attractive. It not only serves the purpose of a fence, but is decidedly more ornamental. Do not confuse our Privet hedge with the lighter grades often offered as of the same height. Our Privet has been grown in nursery rows for two or more years and has been cut back to the ground after its first year. It has many more branches and a much better root system. Therefore, our plants will make a beautiful hedge in a shorter time than the light plants of equal height.

### CALIFORNIA PRIVET

The most extensively planted Privet hedge. Too well known to need description.

	100	1,000
12-18 in., Mail Order Size	\$ 4.25	\$40.00
2 yr., 18-24 in., well branched	5.75	52.50
2 yr., 2-3 ft., heavily branched	7.50	65.00
3 yr., 3-4 ft., very heavy	10.00	90.00

### AMUR RIVER PRIVET (Evergreen)

New evergreen, Southern type. Makes a very dense, compact hedge, resembling Boxwood. It holds its foliage throughout the Winter in Virginia and adjoining states.

	100	1,000
12-18 in., Mail Order Size	\$ 4.75	\$ 42.50
18-24 in., well branched	6.75	62.50
2-3 ft., heavily branched	8.25	72.50
3-4 ft., heavily branched	12.00	110.00

### REGAL PRIVET SEEDLINGS

18-24 in. \$3.00 per doz., \$15.00 per 100

### EVERGREENS

Evergreens are indispensable in present-day landscaping. Few plantings are complete without them. They are delightfully beautiful the year 'round. In Spring when they start their new growth they are most interesting. During the Summer they present an excellent background for flowering shrubs and during the Winter their live, green color adds an expression of cheerfulness and warmth.

We take pride in our evergreens and our method of preparing them for our customers. We shear them carefully to make them uniform, compact specimens. When we prepare them for shipment we take them up with the soil in which they were grown and tie the soil firmly about the roots with burlap and rope. You will find that our evergreens will grow almost without exception.

### WE PAY TRANSPORTATION CHARGES

### ARBORVITAE

Arborvitae, American. One of the best known, tall growing evergreens. Mail Order Size, \$1.25; 18-24 in., \$1.75; 24-30 in., \$2.00; 30-36 in., \$2.50; 3-4 ft., \$4.00; 4-5 ft., \$5.00; 5-6 ft., \$6.00; 6-7 ft., \$7.50.



Amur River Privet Hedge

Arborvitae, American Pyramidal. Tall, columnar and compact. 15 in., Mail Order Size, \$1.50; 18-24 in., \$1.75; 24-30 in., \$2.25; 30-36 in., \$3.00; 3-4 ft., \$4.00; 4-5 ft., \$6.00.

Arborvitae, Berckmans Golden. One of the most useful dwarf compact Arborvitae. 12-15 in., \$1.75; 15-18 in., \$2.65; 18-24 in., \$3.65.

Arborvitae, Chinese. Resembles the American Arborvitae, but makes quicker growth. 15-18 in., Mail Order Size, 85c; 24-30 in., \$1.50; 30-36 in., \$2.25; 3-4 ft., \$2.75; 4-5 ft., \$3.25.

Arborvitae, Chinese Compacts. Compact, semi-dwarf, suitable for foundation plantings. 12-15 in., \$1.25; 15-18 in., \$1.75; 18-24 in., \$2.25.

Arborvitae, Chinese Golden. Resembles Chinese Pyramidal Golden, but is more spreading. 18-24 in., \$2.25; 24-30 in., \$2.75; 30-36 in., \$3.25.

Arborvitae, Chinese Pyramidal. Tall, compact, pyramidal type. 18-24 in., \$2.25; 24-30 in., \$2.75; 30-36 in., \$3.25; 3-4 ft., \$3.75.

Arborvitae, Chinese Pyramidal Golden. Compact, golden pyramidal. 18-24 in., \$2.25; 24-30 in., \$2.75; 3-4 ft., \$3.50.

Arborvitae, Erecta. A semi-dwarf, round-headed type. 18-24 in., \$2.25.

Arborvitae, Geo. Peabody. Most popular American Golden Arborvitae. Like American Arborvitae, except color. 18-24 in., \$1.75; 24-30 in., \$2.25; 30-36 in., \$3.00; 3-4 ft., \$3.75.

Arborvitae, Globe. Dwarf. Excellent for foundation planting. 12 in., \$1.75; 15 in., \$2.25; 18 in., \$2.75; 24 in., \$3.75; 30 in., \$5.75.

Arborvitae, Goldspire. Compact, columnar evergreen, with excellent golden foliage. 18-24 in., \$1.75; 2-3 ft., \$2.25; 3-4 ft., \$3.25.

Arborvitae, Golden-Tipped. Suitable for foundation and group plantings. 15-18 in., \$1.50; 18-24 in., \$2.50.

Arborvitae, Hovey's. Dwarf, dense. Ideal for beds, borders and cemeteries. 18-24 in., \$2.25.

ARBORVITAE, REEDI. Dense, rather conical form. Light green. 12 in., Mail Order Size, \$1.50; 18 in., \$2.25; 24 in., \$2.75; 30 in., \$3.75.

Arborvitae, Siberian. Low growing. 12 in., Mail Order Size, \$1.50; 18 in., \$2.25; 24 in., \$2.75; 30 in., \$3.75; 3-4 ft., \$4.75.

Arborvitae, Spiralis. Upright spiral growth. 18-24 in., \$2.25; 24-30 in., \$2.75.

Arborvitae, Tom Thumb. Very dwarf, low and spreading. 12-18 in., \$1.75; 18-24 in., \$2.25; 2-3 ft., \$3.50; 3-4 ft., \$4.50.

CEDRUS DEODARA. 18-24 in., \$2.25; 2-3 ft., \$3.25; 3-4 ft., \$4.25; 4-5 ft., \$5.75; 5-7 ft., \$7.50.

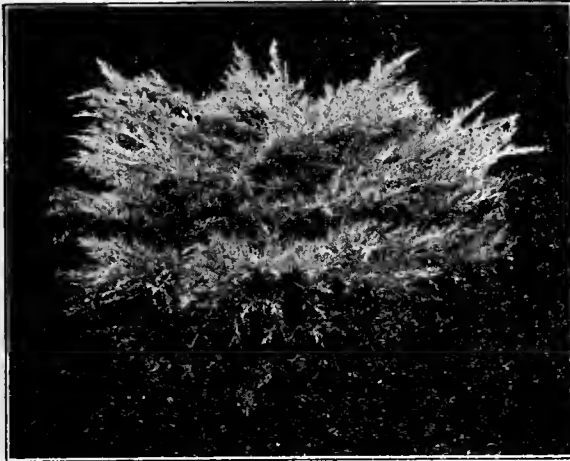
Cedrus Libani (Cedar of Lebanon). 18-24 in., \$2.25; 2-3 ft., \$3.25; 3-4 ft., \$4.25; 4-5 ft., \$5.75; 5-6 ft., \$7.50.

Cryptomeria Japonica. A popular Japanese Evergreen. Tall pyramidal type. Rapid grower. 2-3 ft., \$2.75 each.

Cypress, Blue. 18-24 in., \$2.75; 2-3 ft., \$3.75; 3-4 ft., \$4.75.



Canadian Hemlock (See page 5)



Juniper, Pfitzer's

**FIR, BALSAM.** 15-18 in., \$2.25; 18-24 in., \$3.25; 2-3 ft., \$3.75; 3-4 ft., \$5.75; 4-6 ft., \$7.50.

**Fir, Concolor.** 18-24 in., \$3.25; 2-3 ft., \$4.25; 3-4 ft., \$5.75.

**Fir, Douglas.** 18-24 in., \$2.25; 2-3 ft., \$3.85; 3-4 ft., \$4.25; 4-5 ft., \$5.75.

**HEMLOCK, CANADIAN.** Tall growing. 18-24 in., \$2.25; 2-3 ft., \$3.00; 3-4 ft., \$4.50; 4-5 ft., \$5.00; 6-7 ft., \$8.00.

**JUNIPER, ANDORA.** Prostrate. Beautiful bronze color during Winter. 18-24 in., \$2.25; 24-30 in., \$2.75.

**Juniper, Canadian.** Prostrate. Excellent for foundation planting. 15-18 in., \$2.25; 18-24 in., \$2.75.

**Juniper, Canadian.** Semi-prostrate. 24-30 in., \$2.50; 30-36 in., \$3.00.

**Juniper, Chinese Variegated (J. Chinensis Albo-variegata).** White tipped, blue gray foliage. Very choice columnar Juniper. 2-3 ft., \$4.00; 3-4 ft., \$5.00; 6-7 ft., \$8.00.

These handsome plants are becoming very popular. Many of them are flowering types, bearing even more brilliant and more profuse blooms than some of the deciduous shrubs. See "Rho-Za-Grow" on page 8 for soil conditioner to be used on some of the Broad-Leaved Evergreens.

**Azalea, Dwarf (Hinodogiri and Amoena).** Evergreen foliage. Bright fiery red flowers in Spring. 6-8 in., \$1.25; 8-10 in., \$1.75; 10-12 in., \$2.25; \$25.00 per doz. Use Rho-Za-Grow.

**Azalea (Flame or Calendulacea).** Most brilliant orange red flowering shrub yet known. 18-24 in., \$2.25; 2-3 ft., \$2.75. Use Rho-Za-Grow.

**Azalea Nudiflora.** Showy pink blooms in April and May. 18-24 in., \$2.25; 2-3 ft., \$2.75. Use Rho-Za-Grow.

**Barberry, Dwarf evergreen,** fine for rockery. 10-12 in., \$1.25; \$12.50 per doz.

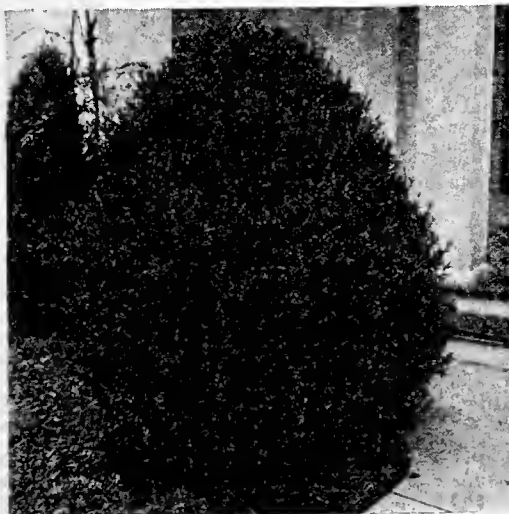
**Barberry, Rosemary.** Small evergreen foliage. Yellow flowers. 12-15 in., \$1.00; 18-24 in., \$1.75.

**Barberry, Wilsoni.** An exceptionally good evergreen variety. Deep green Winter color. 18-24 in., \$1.75; 2-3 ft., \$2.25.

**BOXWOOD, SEMPERVIRENS**  
Large Growing Type.

	Each	Doz.	100
4-6 in., from beds....	\$0.25	\$2.25	\$ 8.00
6-8 in., transplants....	.35	3.50	15.00
8-10 in., transplants....	.45	4.50	20.00
12-15 in., sheared, balled.	1.25	12.00	90.00
15-18 in., sheared, balled.	2.00	22.50	150.00
18-24 in., sheared, balled.	2.50	27.50	200.00
24-30 in., sheared, balled.	3.25	36.00	250.00
30-36 in., sheared, balled.	4.00	45.00	....

Other sizes quoted on request.



Boxwood, Sempervirens

**Juniper Columnaris.** 18-24 in., \$3.00; 2-3 ft., \$3.75.

**Juniper, Greek (J. excelsa stricta).** Slow growing; beautiful gray blue foliage. 15-18 in., \$2.75; 18-24 in., \$3.25.

**Juniper, Irish.** Bluish, pyramidal. 15 in., Mail Order Size, \$1.25; 18-24 in., \$1.75; 2-3 ft., \$2.25; 3-4 ft., \$3.75; 4-5 ft., \$5.00.

**JUNIPER, PFITZER'S.** Low growing. 15-18 in., \$1.75; 18-24 in., \$2.25; 24-30 in., \$3.00; 30-36 in., \$3.75; 3-4 ft., \$4.75; 4-5 ft., \$6.00

**Juniper, Prostrate.** Spread. 24-30 in., \$2.75; 30-36 in., \$3.75.

**JUNIPER, SAVIN.** 15-18 in., \$1.35; 18-24 in., \$1.85; 24-30 in., \$2.40; 30-36 in., \$3.25; 3-4 ft., \$4.75.

**Juniper, Virginia Glauca.** Pyramidal type. Silver foliage. 18-24 in., \$3.00; 24-30 in., \$3.75.

**Pine, Austrian.** Tall growing. Used as specimens or in backgrounds. 18-24 in., \$2.25; 2-3 ft., \$3.00; 3-4 ft., \$4.00; 4-5 ft., \$5.00; 5-6 ft., \$6.50.

**Pine, Mugho.** Very dwarf variety. 12-15 in., \$1.75; 15-18 in., \$2.25; 18-24 in., \$3.00; 24-30 in., \$4.00.

**Pine, Scotch.** A beautiful specimen evergreen. 18-24 in., \$1.75; 2-3 ft., \$2.50; 3-4 ft., \$3.50; 4-5 ft., \$4.50; 6-8 ft., \$10.00.

**PINE, WHITE.** Fast growing. Silvery foliage. 18-24 in., \$1.75; 2-3 ft., \$2.25; 3-4 ft., \$3.00; 4-5 ft., \$4.00; 5-6 ft., \$5.00.

**Retinospora Filifera.** Threadlike Cypress. 15-18 in., \$1.25; 18-24 in., \$1.75; 2-3 ft., \$2.75; 3-4 ft., \$3.50.

**Retinospora Pisifera.** Fast growing, medium height. 18-24 in., \$1.25; 2-3 ft., \$1.75; 3-4 ft., \$3.00; 4-5 ft., \$4.75; 5-6 ft., \$6.00.

**RETINOSPORA PISIFERA AUREA.** Smooth, golden green foliage. Fast growing. 18-24 in., \$1.75; 2-3 ft., \$2.25; 3-4 ft., \$3.00; 4-5 ft., \$3.75.



Pine, Mugho

**Retinospora Pisifera Sawara.** Resembles Retinospora plumosa, faster grower. 18-24 in., \$1.75; 2-3 ft., \$2.25; 3-4 ft., \$3.00; 4-5 ft., \$3.75.

**Retinospora Plumosa.** Plumlike Cypress. 15 in., Mail Order Size, \$1.25; 18-24 in., \$1.75; 2-3 ft., \$2.25; 3-4 ft., \$3.00.

**Retinospora Plumosa Aurea.** 15 in., \$1.25; 18-24 in., \$1.75; 2-3 ft., \$2.25; 3-4 ft., \$3.00; 4-5 ft., \$3.75.

**Retinospora Squarrosa Veitchi (Silver Cypress).** 15 in., \$1.75; 18 in., \$2.25; 24 in., \$2.75; 30 in., \$4.25; 4-6 ft., \$8.00.

**Spruce, Colorado Medium Blue.** 18 in., \$3.25; 24 in., \$4.25; 30 in., \$6.75; 36 in., \$8.25.

**Spruce, Norway.** 15-18 in., 85c; 18-24 in., \$1.60; 2-3 ft., \$1.85; 3-4 ft., \$3.00; 4-5 ft., \$4.50; 5-6 ft., \$6.00; 6-8 ft., \$10.00.

**Spruce, White.** 2-3 ft., \$3.75; 3-4 ft., \$4.75; 4-5 ft., \$6.00.

**Yew, Canadian.** Flat growing type. Excellent for rockery. 12-18 in., \$2.75; 18-24 in., \$3.25.

**Yew, English.** Dense growing. Deep green foliage. 12-18 in., \$2.75; 18-24 in., \$3.25; 2-3 ft., \$4.50.

**Yew, Japanese.** Dense growing. Very hardy. 12-18 in., \$2.75; 18-24 in., \$3.25.

**Broad-Leaved Evergreens**

**Boxwood, Suffruticosa.** Dwarf type, slow growing.

	Each	Doz.	100
3-4 in., from beds....	\$0.25	\$2.25	\$ 8.00
4-6 in., from beds....	.35	3.50	15.00
6-8 in., transplants....	.45	4.50	30.00
8-10 in., transplants....	.60	6.00	45.00
10-12 in., specimens, balled	2.00	22.50	150.00
12-15 in., specimens, balled	2.75	30.00	....

**Cotoneaster Franchetii.** Upright, dense shrub. Pink flowers in June. Red fruit. 18-24 in., \$2.00; 2-3 ft., \$2.50.

**Cotoneaster Horizontalis.** Low-spreading plants, desirable for rock garden and evergreen bed. Bright berries. 18-24 in., \$2.00; 2-3 ft., \$2.50.

**Cotoneaster Microphylla.** Prostrate. Small, deep green foliage. 18-24 in., \$2.50.

**Cotoneaster Pannosa (Silverleaf Cotoneaster).** Evergreen shrub. Red fruit in Fall. 18-24 in., \$2.00; 2-3 ft., \$2.50.

**Daphne Cneorum (Garland Flower).** Dwarf, flat plant with small foliage. Wiry, little stems tipped with dense clusters of rose pink, fragrant flowers. 10-12 in., \$1.75; 12-15 in., \$2.25.

**Elaeagnus (Russian Olive).** Silvery green foliage. Fragrant blossoms, late Fall. 18-24 in., \$2.00.

**English Laurel.** 18-24 in., \$2.25; 2-3 ft., \$2.75; 3-4 ft., \$3.50.

**EUONYMUS JAPONICA.** 15-18 in., \$1.25; 18-24 in., \$1.75; 2-3 ft., \$2.25.

**Euonymus Japonica Variegata.** Like green form, except leaves are silver variegated. 15-18 in., \$1.25; 18-24 in., \$1.75.

**EUONYMUS PATENS.** Best Euonymus grown. Yellow flower, red berries. 18-24 in., \$2.25; 2-3 ft., \$2.75.

**Euonymus Pulchellus.** Dwarf. 6-8 in., 50c, \$5.00 per doz., \$35.00 per 100; 8-10 in., 75c, \$7.50 per doz., \$45.00 per 100.

**Holly, American.** 18-24 in., \$2.25; 2-3 ft., \$3.00; 3-4 ft., \$4.50.

**Holly, English.** 18-24 in., \$2.75.

**Kalmia (Mountain Laurel).** 18-24 in., \$2.75; 2-3 ft., \$3.00. Use Rho-Za-Grow.

**Ligustrum Lucidum (Glossy Privet).** 15-18 in., \$1.25; 18-24 in., \$2.00; 2-3 ft., \$2.75.

**LIGUSTRUM JAPONICUM (Japanese Privet).** 2-3 ft., \$1.00, \$10.00 per doz.; 3-4 ft., \$1.50, \$15.00 per doz.

**Lonicera Nitida.** 12-15 in., \$2.00, \$20.00 per doz.; 18-24 in., \$2.50.

**Magnolia Glauca.** Resembles Magnolia Grandiflora; small leaves; white, fragrant blossoms. 2-3 ft., \$3.00; 3-4 ft., \$4.00.

**MAGNOLIA GRANDIFLORA.** 18-24 in., \$2.50; 2-3 ft., \$3.00; 3-4 ft., \$4.00; 4-5 ft., \$6.00.

**Mahonia Aquifolia.** 18-24 in., \$1.75; 2-3 ft., \$2.75.

**Mahonia Japonica.** 18-24 in., \$2.25; 2-3 ft., \$3.00.

**NANDINA DOMESTICA.** 12-15 in., \$1.25; 15-18 in., \$1.75; 18-24 in., \$2.25; 24-30 in., \$3.00.

**Photinia Serrulata.** White flowers followed by red berries. 18-24 in., \$2.25; 2-3 ft., \$3.00; 3-4 ft., \$4.00.

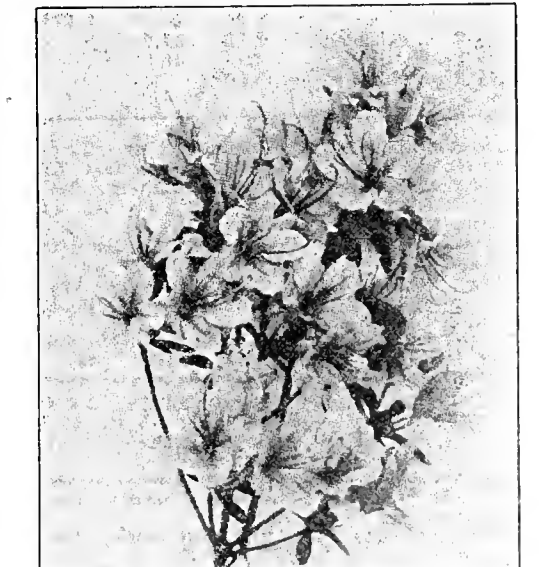
**Pyracantha Angustifolia.** Spreading habit. Orange yellow fruit. 18-24 in., \$2.00; 2-3 ft., \$2.75.

**Pyracantha Lalandi.** Orange colored fruit. 18-24 in., \$2.00; 2-3 ft., \$2.75.

**PYRACANTHA YUNNANENSIS.** Vigorous grower; large, glossy leaves; red fruit in abundance; one of the best. 18-24 in., \$2.00; 2-3 ft., \$2.75; 3-4 ft., \$3.75.

**Rhododendron Catawbiense.** 18-24 in., \$2.25; 24-30 in., \$3.00; 3-4 ft., \$5.00. Use Rho-Za-Grow.

**Rhododendron Maximum.** 18-24 in., \$2.00; 2-3 ft., \$3.00; 3-4 ft., \$4.00. Use Rho-Za-Grow.



Azalea Hinodogiri

## SHADE TREES

Ash, American White. Well-known popular shade tree. Excellent for campuses. 8-10 ft., \$1.75 each, \$17.50 per doz., \$85.00 per 100; 10-12 ft., \$2.50 each, \$25.00 per doz., \$125.00 per 100; 2-2 1/2 in. caliper, \$4.50 each.

Ash, European Mountain. Small tree; noted for its red berries. 4-6 ft., \$1.00 each, \$10.00 per doz.; 6-8 ft., \$1.50 each, \$15.00 per doz.

Beech, American. 6-8 ft., \$4.00 each.

Birch, Cutleaf Weeping. Graceful weeping. White bark. 6-8 ft., \$3.00 each, \$30.00 per doz.

Birch, White. Slender; white bark. 6-8 ft., \$2.50 each; 8-10 ft., \$3.50 each; 2-2 1/2 in. caliper, \$5.00 each; 2 1/2-3 in. caliper, \$7.50.

Birch, Yellow. 6-8 ft., \$2.00 each, \$20.00 per doz.; 8-10 ft., \$2.50 each, \$25.00 per doz.

Catalpa Bungei. Small, umbrellalike tree. 3-4 ft., \$1.50 each, \$15.00 per doz.; 4-5 ft., \$2.00 each, \$20.00 per doz.; 5-6 ft., \$2.50 each, \$25.00 per doz.; 6-7 ft., \$3.00 each, \$30.00 doz.

Elm, American. Famous old shade tree; conspicuous as a street tree in Washington and New England cities. 6-8 ft., \$1.75 each, \$17.50 per doz., \$85.00 per 100; 8-10 ft., \$2.50 each, \$25.00 per doz., \$135.00 per 100; 10-12 ft., \$3.50 each, \$36.00 per doz., \$185.00 per 100; 2-2 1/2 in. caliper, \$5.00 each; 2 1/2-3 in. caliper, \$8.00 each.



## CHINESE ELM

Graceful as a Birch. Rapid growing as the Poplar. Beautiful as the Maple.

Recently introduced by the United States Department of Agriculture and pronounced by the Department in Yearbook of 1926:

"As a shade, windbreak, and avenue tree, the Chinese Elm has proved to be the most successful introduction of this kind thus far attempted.

"A rapid grower, with slender, almost wiry branches. It is one of the first trees to leaf out in the Spring, and the last to shed its foliage in the Fall. Throughout the long season the leaves remain a beautiful green and are remarkably free from the usual plant diseases and insect injuries so common in many of the other Elms."

	Each	Doz.	100
6-8 ft. ....	\$1.45	\$15.00	\$100.00
8-10 ft. ....	2.35	24.00	165.00
1 1/2-2 in. caliper ....	3.25	37.50	.....
2-2 1/2 in. caliper ....	4.75	48.00	.....
2 1/2-3 in. caliper ....	6.50	.....	.....

Flowering Crabs. Very ornamental dwarf, Spring flowering trees in following varieties: Eleyi, Floribunda, Nople, Japanese, Sargent. 3-4 ft., \$1.00 each, \$10.00 per doz.; 4-6 ft., \$1.50 each, \$15.00 per doz.

Ginkgo (Maidenhair Tree). 3-4 ft., \$1.00 each, \$10.00 per doz.; 4-6 ft., \$1.50 each.

Golden Chain (Laburnum). Small tree, bearing long racemes of golden blossoms in June. 5-6 ft., \$2.00 each.

Gum, Sweet. 4-6 ft., \$1.00 each, \$10.00 per doz.; 6-8 ft., \$2.50 each; 8-10 ft., \$3.25 each.

**JAPANESE FLOWERING CHERRY.** 3-4 ft., \$1.75 each, \$20.00 per doz.; 4-5 ft., \$2.50 each, \$25.00 per doz.; 6-7 ft., \$3.75 each, \$40.00 per doz.; 7-8 ft., \$6.00 each.

Japanese Weeping Flowering Cherry. 4-6 ft., \$4.00 each.

Larch, European. 3-4 ft., \$2.00 each; 4-6 ft., \$3.00 each; 6-8 ft., \$3.50 each.

Linden. 6-8 ft., \$2.50 each, \$25.00 per doz.; 8-10 ft., \$3.00 each, \$30.00 per doz.; 1 1/2-2 in. caliper, \$3.50 each.

Magnolia Purpurea. Purplish red. Tuliplike flowers, which appear in early Spring before the foliage. 2-3 ft., \$4.50.

Maple, Ashleaf or Manitoba Maple. Rapid growing shade tree. 6-8 ft., \$1.25 each, \$12.00 per doz.; 8-10 ft., \$1.75 each, \$18.00 per doz.; 10-12 ft., \$2.25 each, \$25.00 per doz.

**MAPLE, NORWAY.** Well-known popular American shade tree. 6-8 ft., \$1.75 each, \$20.00 per doz., \$125.00 per 100; 8-10 ft., \$2.50 each, \$27.50 per doz., \$200.00 per 100; 10-12 ft., \$3.75 each, \$36.00 per doz.; 1 1/2-2 in. caliper, \$4.50 each; 2-2 1/2 in. caliper, \$6.00 each, \$50.00 per doz.

Maple, Scarlet. Blood red foliage in early Spring and late Fall. 4-6 ft., \$1.50 each; 6-8 ft., \$2.25 each.

**MAPLE, SCHWEDLER'S.** Resembles Norway except that foliage is blood red in Spring. 6-8 ft., \$3.00 each; 8-10 ft., \$4.00 each, 1 1/2-2 in. caliper, \$8.00 each.

Maple, Silver. Fastest growing of all Maples. 5-6 ft., 75c each, \$7.50 per doz., \$45.00 per 100; 6-8 ft., \$1.00 each, \$10.00 per doz., \$65.00 per 100; 8-10 ft., \$1.50 each, \$15.00 per doz., \$85.00 per 100; 10-12 ft., \$2.50 each, \$25.00 per doz., \$150.00 per 100; 2-2 1/2 in. caliper, \$3.75 each.

Maple, Sugar. Resembles Norway, but grows into a larger tree. Very desirable for streets and campuses. 6-8 ft., \$2.25 each, \$24.00 per doz.; 8-10 ft., \$3.00 each, \$30.00 per doz.; 10-12 ft., \$3.75 each, \$40.00 per doz.

Maple, Weir's Cutleaf. Resembles Silver, but of weeping type and finer foliage. 8-10 ft., \$3.00 each, \$30.00 per doz.

Mimosa. Spreading tree. Pink flowers and dark green foliage. 4-6 ft., \$2.00 each, \$20.00 doz.

Oak, Chestnut. Large, long-lived tree; chestnut-like foliage. 6-8 ft., \$2.00 each, \$20.00 per doz.; 8-10 ft., \$3.00 each, \$30.00 per doz.

Oak, Pin. Very desirable for street planting. Rather slow grower but of long life. 6-8 ft., \$2.50 each, \$25.00 per doz.; 8-10 ft., \$3.00 each, \$30.00 per doz.; 10-12 ft., \$4.50 each, \$45.00 per doz.

Oak, Red. Large tree, excellent for lawn or street. 6-8 ft., \$2.50 each, \$25.00 per doz.; 8-10 ft., \$3.00 each, \$30.00 per doz.

Oak, White. One of our best known native Oaks. Long-lived. 6-8 ft., \$2.00 each, \$20.00 per doz.; 8-10 ft., \$3.00 each, \$30.00 per doz.

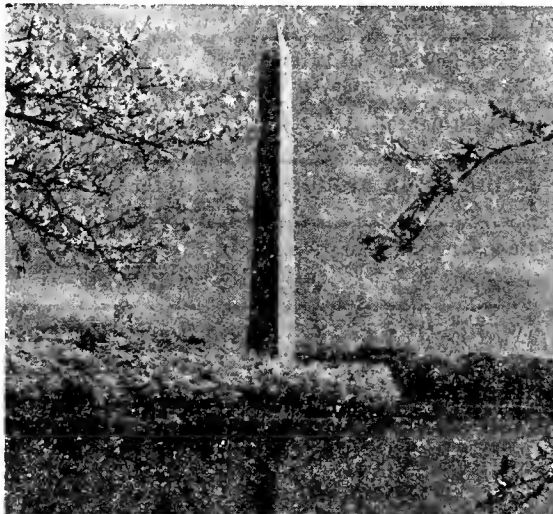
Plane, American. Resembles Oriental Planes, but has slightly larger leaves. 8-10 ft., \$2.50 each, \$25.00 per doz.; 10-12 ft., \$3.50 each, \$36.00 per doz.

Plane, Oriental. Desirable as street tree. Resists smoke better than any other shade tree. 6-8 ft., \$1.75 each, \$18.00 per doz.; 8-10 ft., \$2.25 each, \$25.00 per doz., \$175.00 per 100; 10-12 ft., \$3.00 each, \$30.00 doz., \$225.00 per 100.

**POPLAR, LOMBARDY.** Tall, slender tree; especially desirable for driveways and backgrounds. 5-6 ft., 75c each, \$7.50 per doz., \$35.00 per 100; 6-8 ft., 85c each, \$8.00 per doz., \$45.00 per 100; 8-10 ft., \$1.50 each, \$15.00 per doz., \$65.00 per 100.

Poplar, Simoni. New variety resembling Lombardy; more compact; longer lived. 8-10 ft., \$1.75 each, \$15.00 per doz.

Poplar, Tulip. A rapid grower, native American variety. Broad leaf and good spreading form. 6-8 ft., \$1.75 each, \$18.00 per doz.; 8-10 ft., \$3.00 each, \$30.00 per doz.; 10-12 ft., \$3.75 each, \$36.00 per doz.



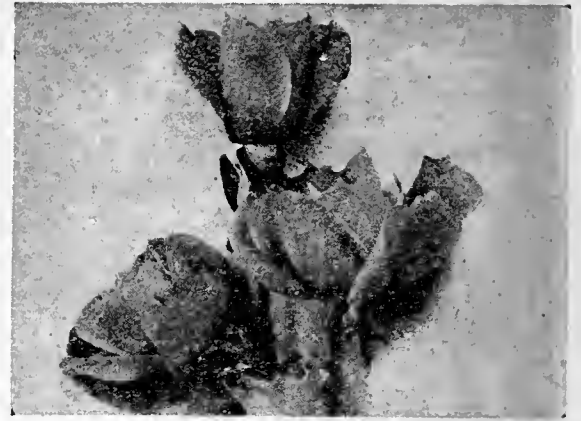
Japanese Flowering Cherry

**VARNISH TREE, or GOLDENRAIN TREE.** Native of China. Clusters of lemon yellow flowers in Midsummer. 6-8 ft., \$2.50 each; 8-10 ft., \$3.50 each.

Willow, Golden. Golden stems; suitable for use near streams. 4-6 ft., 75c each, \$7.50 per doz.; 6-8 ft., \$1.00 each, \$10.00 per doz.

Willow, Weeping. Used especially for planting about streams and in low land. 6-8 ft., \$1.50 each, \$15.00 per doz., \$85.00 per 100; 8-10 ft., \$2.00 each, \$20.00 per doz., \$145.00 per 100.

## ROSES



## THE IMPERIAL DOZEN

Of the thousands of new varieties on the market we have selected the following twelve for our "Imperial Dozen." Each of these Roses has some outstanding meritorious feature.

Chas. P. Kilham. Brilliant orange and glowing scarlet.

Cuba. Cup-shaped, copper red and orange vermillion.

Etoile de Hollande. "The Great Red Rose Without a Fault."

Margaret McGredy. Large Turkish red blending carmine.

Mevrouw G. A. Van Rossem. Gold, red, tints of yellow and rich copper veining.

Miss Erskine Pembroke Thom. Pure canary yellow; very sweetly scented.

Miss Rowena Thom. Fiery rose and mauve with old gold center.

Mme. Edouard Herriot. Coral red and orange.

Pres. Herbert Hoover. Crise pink, flame scarlet, and copper yellow.

Rev. F. Page-Roberts. Large blooms golden inside and red outside.

Talisman. Combinations of gold, apricot, yellow, pink, old rose, and scarlet.

Ville de Paris. Pure yellow; very profuse. Price, 85c each, \$8.50 doz., \$70.00 per 100.

## GOLD MEDAL HYBRIDS

American Beauty. Rich, dark carmine.

Betty. Salmon pink with gold centers.

Betty Uprichard. Carmine and copper outside and salmon pink inside.

Dame Edith Helen. Immense; very double; fragrant; clear pink.

Duchess of Wellington. Saffron yellow, stained deep crimson; fragrant.

Frau Karl Druschki. Finest white Rose.

Golden Ophelia. Gorgeously beautiful bronze.

J. J. L. Mock. Silvery pink against deep carmine background.

Kaiserin Auguste Viktoria. Double white with creamy center.

Lady Hillingdon. Rich ochre yellow; very fragrant.

Paul Neyron. Deep rose; immense.

Pink Radiance. Carmine pink; very fragrant.

Red Radiance. Brilliant red; very fragrant.

Sensation. Sweetly scented, crimson scarlet flowers.

Souv. de Claudius Pernet. Striking Sunflower Yellow.

Souv. de Georges Pernet. Rich Oriental red tipped with carmine and gold.

Sunburst. Yellow, suffused orange; very fragrant.

White Killarney. Snow white with touch of yellow in center.

Willowmere. Rich pink with yellow glow. Price: Mail Order Size, 55c each, \$6.00 per doz.; 2 yr., No. 1, 75c each, \$7.50 per doz., \$60.00 per 100.

## CLIMBING ROSES

American Beauty. Rich, dark carmine.

American Pillar. Brilliant crimson pink; white center.

Dr. W. Van Fleet. Appleblossom pink. Very floriferous.

Mme. G. Staechelin (Spanish Beauty). Full flower of delicate pink.

Paul's Scarlet Climber. Intense scarlet flowers.

Silver Moon. White with golden anthers. Price: Mail Order Size, 55c each, \$6.00 per doz.; 2 yr. No. 1, 75c each, \$7.50 per doz., \$60.00 per 100.

## NEW DAWN

New Everblooming Dr. Van Fleet

Has recently been granted a patent. Possesses all the fine qualities of Dr. Van Fleet and is a continuous bloomer. \$2.00 each, postpaid.

## MISCELLANEOUS ROSES

Baby Rambler. Dwarf plant; small blooms; ever-blooming; in red, white and pink.

Hugonis. Yellow flowers; large, robust bush.

Rosa Rugosa. White or red; very hardy; large shrub.

Price: Mail Order Size, 55c each, \$6.00 per doz.; 2 yr., No. 1, 75c each, \$7.50 per doz., \$60.00 per 100.



## PERENNIALS

Your garden is not complete without perennial borders and perennial beds. Consult our Landscape Department for help in designing and planting perennial beds.

\*Indicates varieties suitable for Rock Gardens. 20c each, \$2.00 per doz., \$12.00 per 100, except as noted

**Achillea** (Milfoil).  
**Millefolium Kelwayi**. Magenta red. June to September. 40 in.  
**\*Tomentosa Aurea**. Yellow. June. 6 in.  
**Alyssum** (Madwort).  
**\*Saxatile Compactum**. Bright yellow. Early Spring. 1 ft.  
**\*Serpillifolium**. Yellow. Spring. 6 in.  
**Anchusa Dropmore**. Blue flowers in May and June. 3 ft.  
**Anemone** (Windflower).  
**St. Brigid**. Various colors. Spring. 18 in.  
**Aquilegia** (Columbine) Long Spurred Hybrids.  
**\*Mrs. Scott Elliott's Strain**. Mixed colors. June. 18 in. (See illustration on this page.)  
**Arabis** (Rockcress).  
**\*Alpina**. White. April and May. 12 in.  
**\*Armeria Alpina**. Purple. May to July. 12 in.  
**\*Lauchiana**. Rosy red. May and June. 4 in.  
**Artemisia** (Sagebrush).  
**Lactiflora**. White. August-September. 3-4 ft.  
**Silver King**. Silver colored stems and foliage. 30 in.  
**\*Asters, Hardy**. Alpina Mixed and Light Blue. May and June. 6 to 8 in.  
**\*Aubrietia** (Rainbow Rockcress). Spring and early Summer. 6 in.  
**\*Eyri** (Rockcress). Lilac rose. April to June. 6 in.  
**Baptisia Australis** (False Indigo). Indigo blue. Midsummer. 2 to 4 ft.  
**\*Campanula Rotundifolia** (Blue Bells of Scotland). Blue. June to August. 1 ft.  
**\*Candytuft** (Hardy Candytuft). White. June-July. 12 in.  
**Carnation** (Hardy Carnation). Mixed colors. June-July. 2 ft.  
**Centurea Montana** (Perennial Cornflower). Large violet-blue flowers. July to September. 2 ft.  
**\*Cerastium Tomentosum** (Snow-in-Summer). Silver foliage, white flowers. May. 6 in.  
**\*Chelranthus Allioni** (Siberian Wallflower). Orange. Spring and early Summer. 16 in.  
**Kewensis** (Wallflower). Yellow. Early Summer. 30 in.  
**Chrysanthemum** (Hardy Chrysanthemum). Pink, red, white and yellow. Fall. 2 ft.  
**Chrysanthemum Maximum** (Shasta Daisy).  
**Convallaria** (Lily-of-the-Valley). White, fragrant blossoms. May. 6 in.  
**Coreopsis** (Coreopsis). Golden yellow, daisylike flowers. All Summer. 3 ft.



Delphinium, Wrexham Hybrids

**Delphinium** (Perennial Larkspur).  
**Chinensis**. Gentian-blue flowers. June. 3-4 ft.  
**English Hybrids, Wrexham Strain**. Rich and varied tints from blue to scarlet. June. 3-4 ft.  
**Dianthus Barbatus** (Sweet William). Mixed. May and June. 12 in.  
**Dianthus Plumarius** (Pinks).  
**\*Deltoides**. Brilliant. Rose. Summer. 6 in.  
**Dicentra** (Bleedingheart). Heart-shaped, rose colored flowers. April or May. 18 in.  
**Digitalis** (Foxglove). Improved Hybrid Varieties of various colors. June-July. 3 to 4 ft.  
**Gaillardia** (Blanketflower). Orange red. May to October. 2 ft.  
**Geum** (Avens).  
**\*Borsl**. Large scarlet flowers. June to late Fall. 16 in.  
**Gypsophila Paniculata** (Babysbreath). White. Early Summer. 40 in.  
**\*Repens**. White. July and August. 6 in.  
**Helianthemum** (Rock or Sunrose).  
**\*Mutabile**. Mixed colors. July and August. 8 to 12 in.  
**Helianthus** (Perennial Sunflower).  
**Harvest Moon**. Rich yellow. September. 4 ft.  
**Heliopsis** (Orange Sunflower).  
**Pitcheriana**. Golden yellow. July to August. 8 ft.

**Hibiscus** (Mallow Marvels). White, pink and red. Midsummer. 4 ft.  
**Hollyhocks**. Double and single. Mixed colors. Midsummer. 4 to 5 ft.  
**Lathyrus** (Perennial Sweet Pea). Mixed colors. June-October. Climbing.  
**Lavandula** (Sweet Lavender). Fragrant, hardy. July. 2 ft.  
**\*Linaria Cymbalaria** (Kenilworth Ivy). Lavender. Summer. 3 in.  
**Linum** (Flax).  
**\*Perenne**. Pale blue. July and August. 12 in.  
**Lupinus** (Lupines). Blue and white. Early Spring. 2 to 3 ft.  
**Lychnis** (Campion).  
**\*Alpina**. Rose. Midsummer. 4 in.  
**Chalcedonica**. Scarlet. All Summer. 3 ft.  
**Lythrum Roseum Superbum** (Rose Loosestrife). Rose pink July-September. 3 ft.  
**Mertensia Virginica** (Virginia Bluebells). Blue flowers fading to clear pink Early Spring. 1 ft.  
**Monarda** (Beebalm). Red. July. 3 ft.  
**Myosotis** (Forget-Me-Not).  
**\*Palustris**. Blue. Early Spring. 6 in.  
**Papaver Orientale** (Oriental Poppy). Crimson scarlet. May-June. 2 ft.  
**Pentstemon** (Beardtongue). Mixed colors. Summer. 3 to 4 ft.  
**Phlox**.  
**Assorted Colors**. Midsummer. 18 in.  
**\*Divaricata**. Dwarf. Fragrant, lavender flowers. Summer.  
**\*Phlox Subulata**. Pink, lavender and white. April and May. 4 in.  
**Physostegia** (False Dragonhead).  
**Virginica**. Rosy lilac. July and August. 3 ft.  
**Platycodon** (Balloonflower). Blue and white. Summer. 1 to 2 ft.  
**Potentilla**.  
**\*Nepalensis**. Bright carmine. May-June. 18 in.  
**Pyrethrum** (Pyrethrum). Red, pink, and mixed. June. 18 in.  
**Salvia** (Meadow Sage).  
**Azurea**. Sky blue. August and September. 3 ft.  
**Turkestanica**. Light pink. July-September. 4 ft.  
**Saponaria**.  
**\*Ocymoides Splendens**. Pink, trailing. Summer.  
**Scabiosa**. Pink and lavender. June. 18 in.  
**Scutellaria** (Skullcap).  
**\*Coelestina**. Blue. Summer. 1 ft.  
**Sedum** (Stonecrop).  
**\*Acre**. Foliage green, flowers bright yellow. Prostrate.  
**\*Album**. Foliage green, flowers white. May-July. 2 to 3 in.  
**\*Cactus**. Yellow blossoms. Early Summer. 3 to 4 in.  
**\*Kamtschaticum**. Orange colored flowers. Prostrate green foliage turning golden in Autumn.  
**\*Middendorffianum**. Yellow. Creeping. July.  
**\*Sarmentosum**. Bright yellow flowers. June, July. Dwarf.  
**Spectabile**. Light green foliage. Rose colored flowers. August and September. 18 in.  
**\*Stoloniferum**. Evergreen leaves, pink flowers. July and August. 6 in.  
**\*Sempervivum** (Hen and Chickens). Rosette-like thick leaves.  
**Stachys Lanata**. Silver leaves, purple flowers. 24 in.  
**\*Statice Lactifolia** (Great Sea-Lavender). Small purplish blue flowers. July and August. 18 in.  
**Stokesia** (Cornflower Aster). Sky blue flowers. July-October. 16 in.  
**Thymus** (Thyme).  
**\*Serpillum**. Creeping purple flowers. Summer. 10 in.  
**Tritoma** (Red Hot Poker). Long spikes of scarlet flowers. Midsummer. 30 in.  
**Tunica** (Coatflower).  
**\*Saxifraga**. Light pink. May. 10 in.  
**Veronica** (Speedwell).  
**Longifolia**. Blue. Midsummer. 30 in.



**\*Repens**. Pale blue. Dwarf branching. May and June. 6 in.  
**\*Viola** (Tufted Pansies). Blue, yellow and mixed.  
**\*Yucca** (Adams Needle). Creamy white flowers in June and July. 4 ft.  
**Variegated Grasses**. 50c per clump, \$5.00 doz.

## ROOTS AND TUBERS CANNAS

Great improvement has been made in Cannas in the last few years, not only in color and size of bloom, but the extension of the blooming period. New varieties now bloom throughout the Fall instead of a couple of weeks as the old varieties did.

A good mixed assortment... \$1.00 \$ 6.00  
 Named varieties ..... 1.50 10.00  
**City of Portland**. Beautiful dwarf pink.  
**Eureka**. Most popular pure white. 3-4 ft. in height.  
**King Humbert**. Red. Bronze foliage.  
**King Humbert**. Yellow. Green foliage.  
**President**. Red crimson. Most popular red. Vigorous. Free bloomer.

## GLADIOLUS

The Gladiolus continues to be our most popular cut flower. No flower is more easily grown. Gladiolus bloom within ten weeks from time of planting and continue to bloom through late Summer and Fall. They should be planted at intervals of about two weeks apart. By making your first planting the first of May and continuing planting at intervals of every two weeks until the middle of July, you can have blossoms from middle of July until frost.

By all means plant some of the Autumn Queen. This odd variety should be planted in early Spring in order to get best results. Unlike most of the other varieties, the Autumn Queen will bloom from the first of September until frost. The spikes will often be 3 to 4 feet long.

Doz. 100  
 Good mixture ..... \$0.50 \$3.85  
 Named varieties ..... .65 4.75

In Gladiolus we offer the following:  
**Alice Tiplady**. Coppery bronze. Early.  
**Autumn Queen**. Creamy yellow suffused pink. Continuous bloomer.  
**Cardinal Prince**. Best of its color.  
**Crimson Glow**. Dark red or crimson. Tall grower.  
**Dr. N. Shook**. Tyrian rose. Good.  
**E. J. Shaylor**. Deep rose pink.  
**Golden Frill**. Beautiful golden yellow.  
**Joe Coleman**. One of most popular early reds.  
**Le Marchal Foch**. Large light pink.  
**Maiden Blush**. Early primulinus pink.  
**Mary Pickford**. Creamy white.  
**Mrs. Francis King**. Beautiful rose scarlet.  
**Mrs. F. C. Peters**. Beautiful rose lilac.  
**Opalescent**. Large pale lavender.  
**Orange Wonder**. Favorite orange.  
**Schwaben**. Delicate pale yellow, dark blotch in center.  
**W. H. Phipps**. La France pink overlaid with light salmon rose.

## IRIS

Each Doz. 100  
**German, Siberian and Spanish**  
**Mixed** ..... \$0.15 \$1.35 \$ 6.75  
**Named Varieties, as follows**... .20 2.00 10.00  

<b>Candelabra</b>	<b>Her Majesty</b>	<b>Prosper</b>
<b>Caprice</b>	<b>Isoline</b>	<b>Laugier</b>
<b>Crimson King</b>	<b>Juanita</b>	<b>Purple King</b>
<b>Dwarf Blue</b>	<b>Loreley</b>	<b>Quaker Lady</b>
<b>Dr. Bernice</b>	<b>Mme. Chereau</b>	<b>QueenCate.lina</b>
<b>Dwarf White</b>	<b>Monsignor</b>	<b>Queen of May</b>
<b>Fairy</b>	<b>Nibelungen</b>	<b>Red Cloud</b>
<b>Gajus</b>	<b>Oriflamme</b>	<b>Rhein Nixe</b>
<b>Georgia</b>	<b>Pallida</b>	<b>Sherwin-</b>
<b>Glory of</b>	<b>Daimatica</b>	<b>Wright</b>
<b>Reading</b>	<b>Perfection</b>	<b>Wyomissing</b>

## GOLD MEDAL IRIS

Price: 25c each, \$2.50 per doz., \$12.00 per 100  
**Afterglow**  
**Albert Victor**  
**Ambassadeur**  
**Dream**  
**Lent A. Williamson**  
**Lord of June**  
**Mme. Gaudichau**  
**Maguifica**  
**Mother of Pearl**  
**Princess Beatrice**  
**Seminole**  
**Shekinah**  
**Japanese Iris**. Assorted colors. 20c each, \$2.00 per doz., \$10.00 per 100.

## DAHLIAS

We have in the past made the common error of offering too many varieties of Dahlias—confusing the average planter who is interested in a limited quantity of the best. Why experiment with so many varieties while from the following list a selection can be made to meet the requirements of the most experienced Dahlia grower?  
**Elinor Vanderveer**. Dec. Large, rose pink.  
**Jane Cowl**. Dec. Immense blooms of glistening bronzy buff and salmon shades.  
**Jersey Beauty**. Dec. Rose pink. Most popular cut flower variety.  
**Mrs. I. de Ver Warner**. Dec. Orchid. One of the best.  
**Sagamore**. Dec. Large golden yellow. Good stems.  
**Sanhican's Blue Bird**. Dec. Large, stout stems.  
**World's Best White**. Dec. Large creamy white.  
 Some of the above varieties have sold for as much as \$25.00 per tuber. All are still good and among the best. We offer any of the above varieties at 50c each, \$5.00 per doz., postpaid.  
**Good Mixed Varieties**, unnamed, \$2.00 per doz.

## SPRING FLOWERING BULBS

Sold for Fall Delivery Only.

- Crocus, Good Mixture. 65c per doz., \$3.75 per 100.  
 Hyacinths, Mixed. \$1.25 per doz., \$7.35 per 100, \$65.00 per 1,000.  
 Hyacinths, Named Varieties. \$1.65 per doz., \$7.85 per 100, \$75.00 per 1,000.  
 Narcissus, Paperwhite, Emperor, Empress, Sir Watkins. \$1.25 per doz., \$7.25 per 100.  
 Tulips, Single Early, Double Early, Cottage and Breeder Tulips. 85c per doz., \$4.75 per 100, \$38.00 per 1,000.  
 Tulips, Darwin Mixed. Red, pink, lavender, white and yellow. 65c per doz., \$3.85 per 100, \$35.00 per 1,000.  
 Tulips, Darwin Named. 85c per doz., \$4.75 per 100, \$38.00 per 1,000.

## PEONIES

- |  |      |      |
|--|------|------|
|  | Each | Doz. |
| Unnamed varieties in pink, red and white                 |      |      |
| Named varieties as follows                               | .65  | 6.50 |
| Eduis Superba. Fragrant. Dark pink. Early.               |      |      |
| Feix Crousse. Brilliant red. Fragrant. Midseason.        |      |      |
| Festiva Maxima. Pure white with tinge of red.            |      |      |
| L'Eclatante. A free flowering, midseason red.            |      |      |
| Rachel. Free blooming bright garnet red.                 |      |      |
| Queen Victoria. White splashed crimson.                  |      |      |
| Venus. Delicate pink with flesh white collar. Midseason. |      |      |

### PRIZE WINNING VARIETIES

- 85c each, \$8.50 per doz.  
 Baroness Schroeder. Flesh white, large bloom. Midseason.  
 Mme. Boulanger. Soft rose bordered silver.  
 Mareschal Valliant. Large, globular, dark mauve. Very late.  
 Mary Brand. Deep red. Midseason.  
 Mons. J. Elie. Glossy lilac pink shaded deep rose at base. Midseason.  
 Sarah Bernhardt. Mauve rose with silver tip. Late.



Regal Lily

## LILIES

- 30c each, \$3.00 per doz., except as noted.  
 Amaryllis. Blended orange and pink. 60c each, \$6.00 per doz.  
 Auratum (Goldband Lily). White with a wide gold band down the center of each petal.  
 Candidum (Madonna Lily). Pure white. Combines well with Larkspur.  
 Funkia (Plantainlily). Sky blue flowers in July.  
 Hemerocallis (Daylily). Tall, graceful. Yellow blossoms. Does well in shade or damp land.

Regal Lily. White flowers suffused with pink.  
 Tigrinum (Tiger Lily). Orange flowers spotted black.

## GROUND COVERS

- Bittersweet Evergreen (Euonymus radicans). 2 yr., 60c each, \$6.00 per doz.; 3 yr., \$1.00 each, \$10.00 per doz.  
 Honeysuckle, Hall's. Mail Order Size, 35c each. Standard grade, 50c each, \$5.00 per doz., \$25.00 per 100.  
 Pachysandra (Japanese Spurge). \$2.50 per doz., \$20.00 per 100.  
 Vinca Minor (Periwinkle). Useful as a ground cover. Small blue flowers. Mail Order Size Plants, 25c each, \$2.00 per doz. Clumps, 40c each, \$4.00 per doz.

## VINES

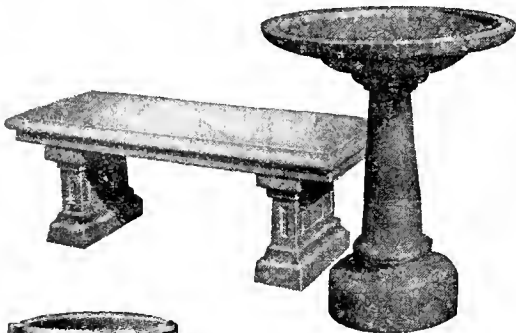
- Mail Order Size, 35c each, \$3.00 per doz., \$20.00 per 100. 2 yr. only.  
 2 and 3 yr. Standard Grades, 50c each, \$5.00 per doz., \$35.00 per 100, except as noted.  
 Bittersweet (Celastrus Scandens). Popular for its orange colored berries in Winter.  
 Boston Ivy. Most popular climber. Clings to walls.  
 Cinnamon Vine. Rapid growing vine. Climbs 10 to 30 ft.  
 Clematis, Large Flowering; Andre (red); Duchess of Edinburgh (white); Jackmani (purple). 2 yr. only, \$1.00 each, \$10.00 per doz.  
 Clematis Paniculata Grandiflora. Useful for trellises. Blooms in masses of white in August.  
 English Ivy. Popular for covering low walls and as a ground cover in low, shady places. Evergreen.  
 Kudzu Vine. Desirable for screens where quick effect is necessary. Broad leaves.  
 Silver Lace Vine. Rapid grower. Covered with masses of white flowers throughout Autumn. 2 year only, 75c each, \$7.50 per doz.  
 Trumpet Vine (Begonia). Large, orange scarlet, trumpet shaped flowers.  
 Virginia Creeper. A native climber. Quick grower. Wisteria. Purple flowers. Rapid grower.

## Garden Furniture and Gardening Supplies

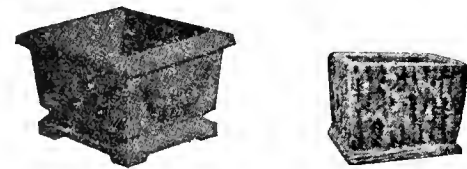
We pay transportation charges on all Nursery stock to points in U. S. east of the Mississippi. Garden Supplies are sold F.O.B. WAYNESBORO, except as noted.

### GARDEN FURNITURE

Our Garden Furniture is made of permanent reinforced concrete in various designs. Write for Descriptive Folder and Price List.  
 All Garden Furniture and Supplies are sold F.O.B. our shipping point unless otherwise specified.  
 We manufacture the Garden Furniture we offer and sell direct to you. No garden is complete without at least a few pieces of Garden Furniture.



- LAWN BENCH. 4 ft. long, 20 in. wide and 14 in. high. \$9.50.  
 BIRD BATH. 28 1/2 in. high, 27 in. across basin, diameter at base, 14 in. \$9.50.  
 MADEIRA JARDINIERE. 17 in. high, 17 in. across, 14 in. deep. \$3.75.



- CORINTHIAN FLOWER BOX. 11 in. high, 16 in. square. \$3.25.  
 RUSTIC FERN BOX. 9 in. deep, 12 in. square. \$1.75.

- 10 in. BRONZE SUNDIAL. Hand finished, postpaid, \$5.25; 12 in., \$6.50.  
 SUNDIAL PEDESTAL. Built of same material on same design as Bird Bath Pedestal. 30 in. high, \$4.75.  
 GAZING GLOBE. 8 in., \$5.75; 10 in., \$7.25; 12 in., \$9.50.

## Grass Seed

Burson Evergreen Lawn Mixture. One of the first duties of Mr. Burson, who is now State Supervisor of Parks, on coming to Virginia was to work out a Grass Seed Mixture which would furnish a green turf within a few weeks, be permanent, and green throughout the year. After many experiments and tests a mixture meeting the requirements in Virginia and adjoining states was finally formulated and adopted as the state standard. Burson Evergreen Lawn Mixture is being extensively used for the small home lawn, the city parks, college campus and wherever a uniform, permanent evergreen sod is required.

We are state distributors for this popular Grass Seed Mixture and are giving our customers the advantage of much lower prices—made possible by increased volume. Per lb., 55c, postpaid; 10 lb. bag, \$4.75, postpaid; 100 lbs., \$39.50.

Shady Lawn Mixture. Produces perfect sod in shady places. Per lb., 65c, postpaid; 10 lb. bag, \$5.25, postpaid; per 100 lbs., \$45.00, f.o.b. Waynesboro, Va.

## Pomo-Green with Nicotine

Complete protection against Black Spot, Mildew, Leaf-Eating Insects, Aphids.

Pomo-Green (endorsed by the American Rose Society) was first introduced as a rose specific for the control of Black Spot, Mildew and Leaf-Eating Insects, but its general use has developed the fact that it is an outstanding material for the control of all garden troubles which can be controlled by dusting or spraying.  
 1 lb. can, postpaid.....\$0.75  
 5 lb. can, postpaid..... 3.00



## Rose Dust

Controls Black Spot and Mildew on Roses and Grapes. 1 lb. can, 45c, postpaid.

## Bordeaux Mixture

An excellent fungus spray. 4 lb. bag, \$1.00, f.o.b. Waynesboro.

## Sunoco

Kills Red Spider, which is the most common enemy of evergreens. Also kills San Jose Scale, Rose Scale, Oyster-shell Scale, Pine Leaf Scale, and Euonymus Scale.

Per 1 gal. can, \$1.25. Makes 25 gals. dormant spray material, 100 gals. Summer spray.

## Slug Shot

Kills Insects, Bean Beetles, Worms, Slugs, Rose Beetles, Caterpillars, etc. 1 lb. can, 35c, postpaid

## German Granulated Peat Moss

Used as a mulch and in poultry houses. 50 lbs., \$1.75; bale approx. 150 lbs., \$4.00; 10 bales, \$35.00.

## Garden Fertilizers

We are offering only thoroughly tested brands that we can safely recommend.

### Vigoro

This year you can have the kind of lawn you have always wanted. Beautiful flowers and shrubbery will also be yours by applying Vigoro.

- All prices f.o.b. Waynesboro, Va.  
 5 lb. bag.....\$0.50 50 lb. bag.....\$2.50  
 25 lb. bag..... 1.50 100 lb. bag..... 4.00

### Bonemeal

- 50 lb. bag.....\$1.85 100 lb. bag.....\$3.50  
 Prices f.o.b. Waynesboro, Va.



The New Soil Conditioner and Plant Food, "Rho-Za-Grow" has taken the guesswork out of Rhododendron growing.

Rhododendrons and their kindred broadleaved evergreens, the Azaleas, Kalmias, Andromedas, etc., are lovely things, but many planters hesitate to plant these aristocratic American shrubs because of their exacting soil requirements.

"Rho-Za-Grow" is a scientifically balanced soil conditioner and plant food. Use it on all plants requiring sour soils. "Rho-Za-Grow" contains exactly the proper balance of acids, neutral plant food, and humus. It sours and lightens the soil, and it has high plant food content.

Apply it to your Rhododendron and Azalea beds, and they will show their appreciation with a wealth of gorgeous blooms and healthy, deep green foliage.

- Prices  
 10 lb. bag ... \$1.00 50 lb. bag .... \$2.75  
 25 lb. bag ... 1.75 100 lb. bag .... 4.50  
 Per ton \$75.00

Transportation prepaid to points in U. S. east of the Mississippi

## Wizard Brand Sheep Manure

For Lawns and Gardens

Puts new life into your shrubbery and makes new or old lawn velvety green.

- 50 lb. bag ..... \$1.85—f.o.b. Waynesboro  
 100 lb. bag ..... \$3.50—f.o.b. Waynesboro

Ask for Prices on FIELD SEEDS  
 We Can Often Save You Money